

# Annexin Family

## Antibody Sampler Kit

Cat. # AK6730  
Size Kit

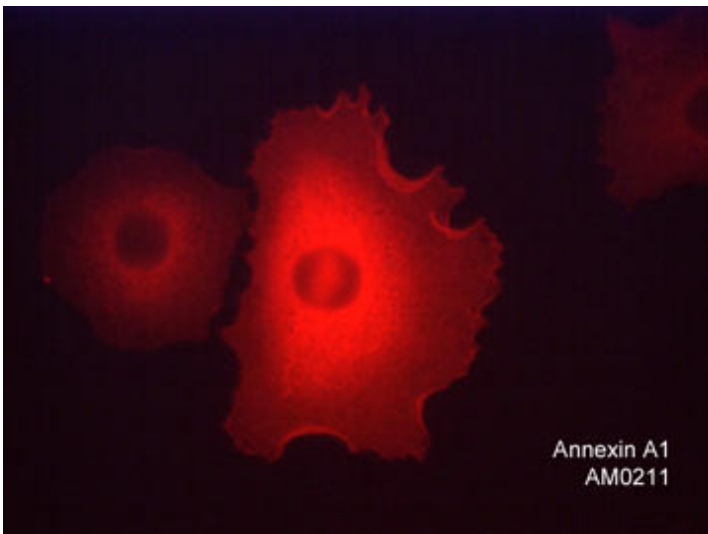
### Kit Summary

The annexin family antibody sampler kit can be used to detect the expression level of annexin A1, A2, A5, and A6. The kit includes high affinity mouse monoclonal antibodies to examine annexin A1, A2, A5, or A6 expression levels in western blot, ELISA, immunoprecipitation, and immunocytochemistry.

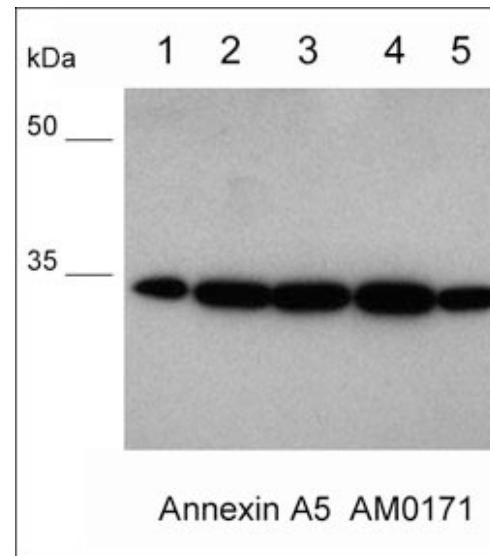
### Kit Components

Cat. #	Description	Product Type	Size	Applications	Species Reactivity	WB Dilution
AM0211	Annexin A1	Mouse mAb	50 µl	WB, E, ICC, IP	Hu	1:1000
AM0181	Annexin A1	Mouse mAb	50 µl	WB, IP, ICC, IHC	Hu, Rt, Ms, B	1:1000
AM0091	Annexin A2	Mouse mAb	50 µl	WB, ICC, E, IP-MS	Hu	1:1000
AM2981	Annexin A2 (C-terminal region)	Mouse mAb	50 µl	WB, E, IP, ICC, IHC	Hu, Rt, Ms, Ck	1:1000
AM0171	Annexin A5	Mouse mAb	50 µl	WB, E, IP-MS	Hu	1:1000
AM3301	Annexin A6	Mouse mAb	50 µl	WB, E, IP	Hu, Rt, Ms	1:1000

Applications: WB = Western blot, E = ELISA, ICC = Immunocytochemistry, IP = Immunoprecipitation, IHC = Immunohistochemistry, FC = Flow Cytometry  
Species: H = Human, R = Rat, Ms = Mouse, C = Chicken, F = Fish, Fr = Frog, Rb = Rabbit



Immunocytochemical labeling of Annexin A1 in paraformaldehyde fixed human A549 cells. The cells were labeled with mouse monoclonal anti-Annexin A1 (clone M021). The antibody was detected using goat anti-mouse Ig DyLight® 594.



Western blot of human PC3 cells (lane 1), human breast tissue (lane 2), lung tissue (lane 3), skin tissue (lane 4), and brain tissue (lane 5). The blot was probed with mouse monoclonal anti-Annexin A5 antibody (AM0171) at 1:500 (lanes 1-5).

FOR RESEARCH USE ONLY. NOT FOR DIAGNOSTIC OR THERAPEUTIC USE.

# Annexin Family

## Antibody Sampler Kit

Cat. # AK6730

Size Kit

### Background

The Annexin family is composed of at least thirteen mammalian genes (Annexin A1-13). These proteins are characterized by a conserved core domain which binds to phospholipids in a Ca<sup>2+</sup>-dependent manner and a unique amino terminal region which may confer binding specificity. Annexins have roles in membrane fusion, endocytosis, secretion, and repair. Annexin A1 binds to cellular membranes in a calcium-dependent manner, promotes membrane fusion and endocytosis, and has been implicated as an anti-inflammatory mediator. Annexin A2 is a cytoskeletal calcium-dependent phospholipid binding protein, which has been shown to be a mediator of corticosteroid activity, a substrate for serine/threonine kinases and growth regulated tyrosine kinases, and may play a role in secretion. Annexin A5 is a PKC inhibitor, directly interacts with VEGFR2 receptor, and binds phosphatidylserine to inhibit blood coagulation. Annexin A6 reverses transformation of A431 cells after overexpression, and this effect may involve annexin A6 targeting of p120 RasGAP to the plasma membrane to inactivate Ras.

### Background References

Grewal T & Enrich C (2009) Cell Signal. 21(6):847.

Feinberg, J.M. et al. (1991) J Histochem & Cytochem. 39:955.

### Buffer and Storage

Mouse monoclonal antibodies are supplied in phosphate-buffered saline, 50% glycerol, 1 mg/ml BSA, and 0.05% sodium azide. Store all at -20°C. Stable for 1 year.

### Product Citations

#### Cat. #      Citation & Application

AM2981      Gilliam, L.A. et al. (2011) AJP Lung Cell Mol Phys 300:L225. (IHC: mouse diaphragm)

AM2981      Moylan, J. et al. (2014) Redox biology 2:910. (WB: C2C12 myoblast)

FOR RESEARCH USE ONLY. NOT FOR DIAGNOSTIC OR THERAPEUTIC USE.