

Girdin Phospho-Regulation

Antibody Sampler Kit

Cat. # GK6980
Size Kit

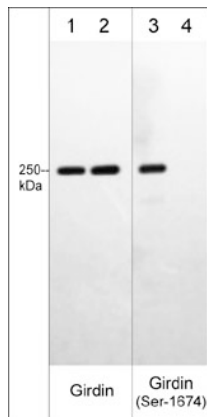
Kit Summary

The Girdin phospho-regulation antibody sampler kit can be used to detect phosphorylation of Ser-1416, Ser-1674 and Tyr-1764 relative to total Girdin expression levels. The kit includes rabbit polyclonal, phospho-specific antibodies to Ser-1416, Ser-1674, and Tyr-1764, as well as a mouse monoclonal antibody to detect total Girdin expression. The kit also includes secondary reagents for detection of these antibodies in Western blot, ELISA, or immunocytochemistry.

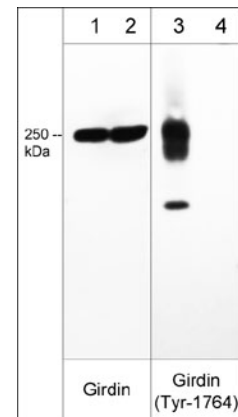
Kit Components

Cat. #	Description	Product Type	Size	Applications	Species Reactivity	WB Dilution
GM0121	Girdin (C-terminus)	Mouse mAb	50 µl	WB, ICC, IHC, IP	Hu	1:250
GP5791	Girdin (Ser-1416), phospho-specific	Rabbit pAb	50 µl	WB, E	Hu, Rt, Ms	1:500
GP5781	Girdin (Ser-1674), phospho-specific	Rabbit pAb	50 µl	WB, E	Hu, Rt, Ms	1:1000
GP5801	Girdin (Tyr-1764), phospho-specific	Rabbit pAb	50 µl	WB, E	Hu, Rt, Ms	1:1000
MS3001	Anti-Mouse Ig:HRP	Donkey pAb	100 µl	WB, E	Ms	1:5000
RS3251	Anti-Rabbit Ig Light-Chain Specific:HRP	Mouse mAb	100 µl	WB, E, ICC, IHC	Rb	1:5000

Applications: WB = Western blot, E = ELISA, ICC = Immunocytochemistry, IP = Immunoprecipitation, IHC = Immunohistochemistry, FC = Flow Cytometry
Species: H = Human, R = Rat, Ms = Mouse, C = Chicken, F = Fish, Fr = Frog, Rb = Rabbit



Western blot image of human A431 cell lysates treated with Calyculin A (lanes 1-4). The blot was treated with lambda phosphatase to dephosphorylate Girdin phosphosites (lanes 2 & 4). The blot was probed with mouse monoclonal anti-Girdin (lanes 1 & 2) or rabbit polyclonal anti-Girdin (Ser-1674), phospho-specific (lanes 3 & 4).



Western blot image of human A431 cell lysates treated with pervanadate (lanes 1-4). The blot was treated with alkaline phosphatase to dephosphorylate Girdin phosphosites (lanes 2 & 4). The blot was probed with mouse monoclonal anti-Girdin (lanes 1 & 2) or rabbit polyclonal anti-Girdin (Tyr-1764), phospho-specific (lanes 3 & 4).

FOR RESEARCH USE ONLY. NOT FOR DIAGNOSTIC OR THERAPEUTIC USE.

Girdin Phospho-Regulation

Antibody Sampler Kit

Cat. # GK6980

Size Kit

Background

Girdin, a member of the CCDC88 (Hook related protein) family, is an actin binding protein involved with cell migration and maintaining cytoskeletal organization. Girdin has conserved domains at the N- and C-terminus that bind microtubules and actin, respectively. It enhances PI3-kinase dependent phosphorylation of proteins, most notably Akt. This same activity can contribute to tumor proliferation, invasion, and metastasis in breast, ovarian, prostate, and pancreatic tissues. Girdin is phosphorylated at three separate locations: Ser-1416, Ser-1674, and Tyr-1764. Ser-1416 is the primary Akt phosphorylation site, while Cyclin-dependent kinases interact with Girdin and phosphorylate Ser-1674. Multiple receptor tyrosine kinases can bind girdin and phosphorylate Tyr-1764.

Background References

Simpson, F. (2005) *Traffic*. 6(6):442

Jiang, P. (2008) *Cancer Res*. 1;68(5):1310

Buffer and Storage

Primary antibodies are supplied in phosphate-buffered saline, 50% glycerol, 1 mg/ml BSA, and 0.05% sodium azide. The secondary reagents are supplied in the same buffer without azide. Store all at -20°C . Stable for 1 year.

Product Citations

Cat. # Citation & Application

MS3001 Estrada-Bernal, A. et al. (2011) *J Neurooncol*. 102:353. (Western Blot)

RS3251 Estrada-Bernal, A. et al. (2011) *J Neurooncol*. 102:353. (Western Blot)

RS3251 Kawasaki, H. et al. (2013) *World J Gastroenter*. 19(17):2629. (WB, ICC: mouse intestinal myofibroblasts)

FOR RESEARCH USE ONLY. NOT FOR DIAGNOSTIC OR THERAPEUTIC USE.