

# Girdin (C-terminus)

## Mouse Monoclonal IgG1

Cat. # GM0121

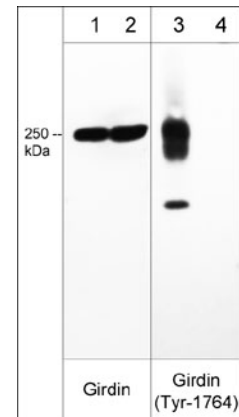
Size 100 µl

### Background

Girdin, a member of the CCDC88 (Hook related protein) family, is an actin binding protein involved with cell migration and maintaining cytoskeletal organization. Girdin has conserved domains at the N- and C-terminus that bind microtubules and actin, respectively. It enhances PI3-kinase dependent phosphorylation of proteins, most notably Akt. This same activity can contribute to tumor proliferation, invasion, and metastasis in breast, ovarian, prostate, and pancreatic tissues. Girdin is phosphorylated at three separate locations: Ser-1416, Ser-1674, and Tyr-1764. Ser-1416 is the primary Akt phosphorylation site, while Cyclin-dependent kinases interact with Girdin and phosphorylate Ser-1674. Multiple receptor tyrosine kinases can bind girdin and phosphorylate Tyr-1764.

### Background References

Simpson, F. (2005) *Traffic*. 6(6):442  
Jiang, P. (2008) *Cancer Res*. 1;68(5):1310  
Lin, C. (2011) *Sci Signal*. 4(192): ra64



Western blot image of human A431 cell lysates treated with pervanadate (lanes 1-4). The blot was treated with alkaline phosphatase to dephosphorylate Girdin phosphosites (lanes 2 & 4). The blot was probed with mouse monoclonal anti-Girdin (lanes 1 & 2) or rabbit polyclonal anti-Girdin (Tyr-1764), phospho-specific (lanes 3 & 4).

### Applications

WB	1:250
ICC	1:50
IHC	1:50
IP	1:50

### Species Reactivity

Hu

### Specificity

Clone M012 mouse monoclonal antibody detects a 250 kDa\* protein on SDS-PAGE immunoblots of human A431 cells and human brain tissue. The antibody also works for immunoprecipitation, immunohistochemistry, and immunocytochemistry.

\*All molecular weights (MW) are confirmed by comparison to Bio-Rad Rainbow Markers and to western blot mobilities of known proteins with similar MW.

End user should determine optimal dilution for their particular applications and experiments.  
Western blot membranes were incubated with diluted antibody in 5% non-fat milk, PBS, 0.04% Tween20 for 1 hour at room temperature.

### Immunogen

Clone (M012) was generated from a recombinant protein that included amino acid residues within the C-terminal region of human Girdin.

### Buffer and Storage

Mouse monoclonal antibody purified with protein G chromatography is supplied in 100µl phosphate-buffered saline, 50% glycerol, 1 mg/ml BSA, and 0.05% sodium azide. Store at -20°C. Stable for 1 year.

### Related Products

AK6340 Akt Phospho-Regulation Antibody Sampler Kit  
GP5791 Girdin (Ser-1416), phospho-specific Rabbit Polyclonal  
GP5781 Girdin (Ser-1674), phospho-specific Rabbit Polyclonal  
GP5801 Girdin (Tyr-1764), phospho-specific Rabbit Polyclonal  
GK6980 Girdin Phospho-Regulation Antibody Sampler Kit

FOR RESEARCH USE ONLY. NOT FOR DIAGNOSTIC OR THERAPEUTIC USE.

www.ecmbiosciences.com  
telephone: 859-879-2075  
toll-free: 1-800-859-8202  
info@ecmbiosciences.com

**ECMBiosciences**

Rev 1/23/2018