

# Integrin $\alpha$ L (Extracellular region)

Mouse Monoclonal IgG1

Cat. # IM5941

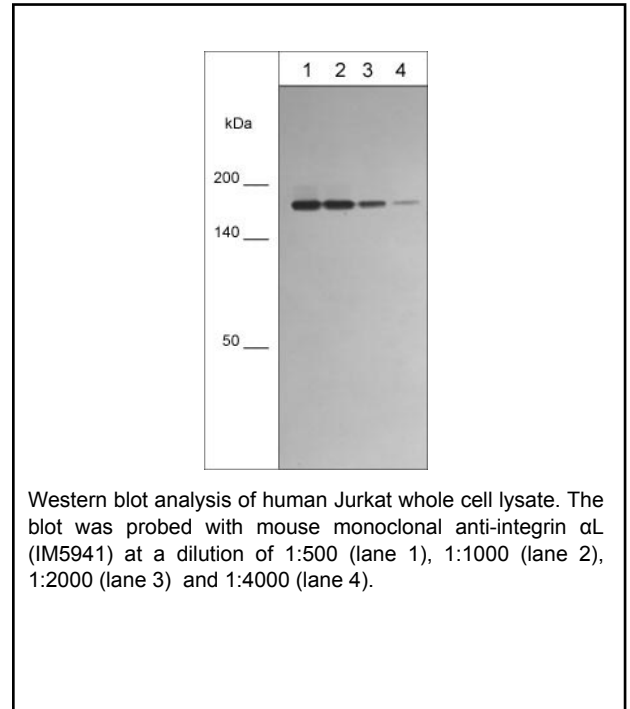
Size 100  $\mu$ l

## Background

Integrins are cell adhesion molecules that can mediate bidirectional transfer of signals across the plasma membrane. The cytoplasmic domains of integrin family members interact with components of the signal transduction apparatus within cells. Integrin receptors contain noncovalently associated  $\alpha$  and  $\beta$  subunits that consist of a large extracellular region (the ligand-binding domain), a short transmembrane region, and a cytoplasmic domain of varying length. In mammals, at least 17  $\alpha$  subunits and 8  $\beta$  subunits have been identified and these proteins can heterodimerize to form at least 22 different receptors. The integrin  $\beta$ 2 subunit associates with integrin  $\alpha$ L to form a receptor for ICAM family members. Integrin  $\beta$ 2/ $\alpha$ L is involved in a variety of immune phenomena including leukocyte-endothelial cell interaction, cytotoxic T-cell mediated killing, and antibody dependent killing by granulocytes and monocytes.

## Background References

Wang, L. et al. (2012) J Cell Physiol. 227(2):474.  
Iwamoto, D. & Calderwood, D. (2015) Cur Opin Cel Bio. 36:41.



## Applications

WB	1:1000
ELISA	1:1000
ICC	1:100

## Species Reactivity

Hu, Rt, Ms

## Specificity

Clone M594 was purified using Protein A chromatography. The antibody detects a 180 kDa\* protein corresponding to the molecular mass of Integrin  $\alpha$ L on SDS-PAGE immunoblots of human Jurkat cells.

End user should determine optimal dilution for their particular applications and experiments.  
Western blot membranes were incubated with diluted antibody in 5% non-fat milk, PBS, 0.04% Tween20 for 1 hour at room temperature.

\*All molecular weights (MW) are confirmed by comparison to Bio-Rad Rainbow Markers and to western blot mobilities of known proteins with similar MW.

## Immunogen

Clone M594 was generated from a recombinant protein containing amino acid residues in the extracellular region of human Integrin  $\alpha$ L. This sequence has low homology to other integrin family members.

## Buffer and Storage

Mouse monoclonal antibody purified with protein A chromatography is supplied in 100 $\mu$ l phosphate-buffered saline, 50% glycerol, 1 mg/ml BSA, and 0.05% sodium azide. Store at  $-20^{\circ}$ C. Stable for 1 year.

## Related Products

IM5831	Integrin $\alpha$ 2 (Extracellular region) Mouse Monoclonal
IM5841	Integrin $\alpha$ V (Extracellular region) Mouse Monoclonal
IM5821	Integrin $\beta$ 1 (Extracellular region) Mouse Monoclonal
IM5811	Integrin $\beta$ 3 (Extracellular region) Mouse Monoclonal
IM1261	Integrin $\beta$ 4 (Cytoplasmic region) M126 Mouse Monoclonal

FOR RESEARCH USE ONLY. NOT FOR DIAGNOSTIC OR THERAPEUTIC USE.

www.ecmbiosciences.com  
telephone: 859-879-2075  
toll-free: 1-800-859-8202  
info@ecmbiosciences.com

**ECM**Biosciences

Rev 3/19/2018